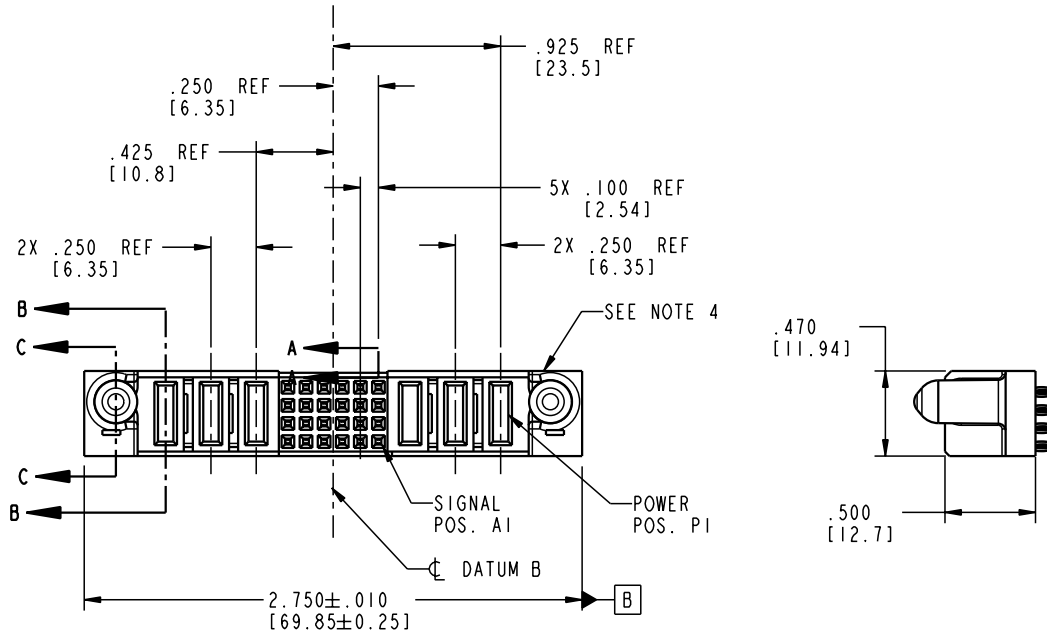


Tous droits strictement réservés. Reproduction ou communication o des tiers interdite sous quelque forme que ce soit sans autorisation écrite du propriétaire. Propriété de c FCI. Droits de reproduction FCI.

All rights strictly reserved. Reproduction or issue to third parties in any form whatever is not permitted without written authority from the proprietor. Property of FCI. Copyright FCI.

PRODUCT NO.	ROWS	POWER			SIGNAL							POWER			E1		
		E2	P6	P5	P4	6	5	4	3	2	1	P3	P2	P1			
51740-10302403CC	A B A		PC	PC	PC	F	F	F	F	F	F	F	F	PC	PC	PC	



CODE	DIM "M" MATING LENGTH	CONTACT TYPE
F	N/A [N/A]	SIGNAL
PC	.042 [1.07]	POWER

mat'l code				SEE NOTE 2	tolerances unless otherwise specified		CUSTOMER		<b>FCI</b> www.fciconnect.com	
ltr	ecn no.	dr	date	linear	.XX±.01/0.X±0.3		COPY		title	
A	V03-0486	MEM	5/1/03	angles	.XXX±.005/0.XX±0.13		projection		3P + 24S + 3P	
				dr	.XXX±.0020/0.XXX±0.051		INCH/MM		VERTICAL PRESS FIT RECEPT	
				enr	0° ± 2°		scale		product family	
				chr	M. MOSTOLLER 5/1/03		1:1		PwrBlade	
				appd	M. MOSTOLLER 5/1/03		size		dwg no	
				sheet index	H. BREWBAKER 5/1/03		A		51740-10302403CC	
				revision	M. MOSTOLLER 5/1/03		A		code	
				sheet	A A A A		A		213	
					1 2 3 4				sheet	
									1 of 4	

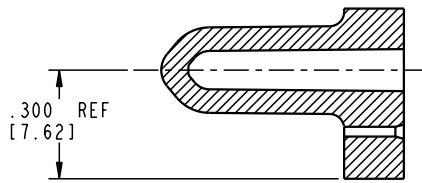
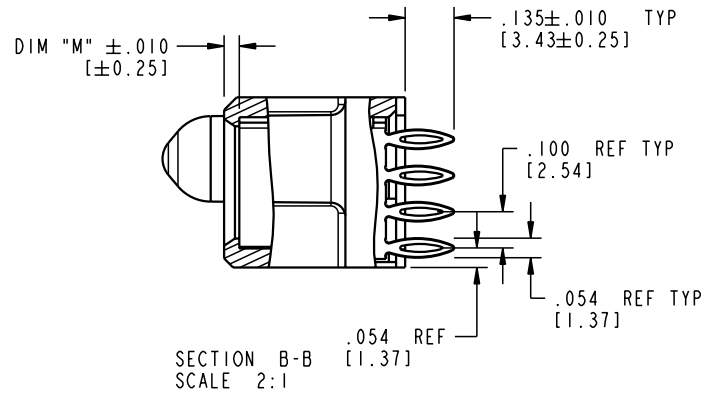
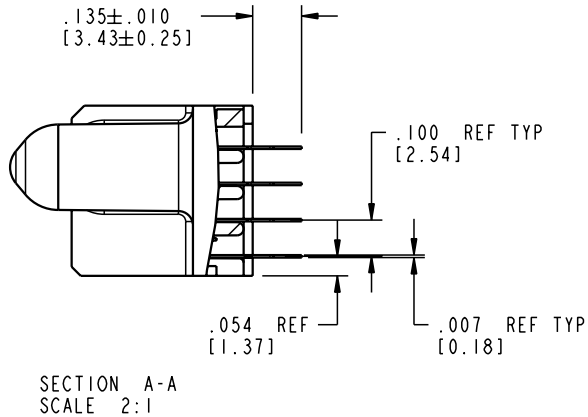
Pro/E


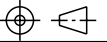
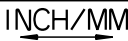
cage code 22526

Tous droits strictement réservés. Reproduction ou communication à des tiers interdite sous quelque forme que ce soit sans autorisation écrite du propriétaire. Propriété de c FCI. Droits de reproduction FCI.

All rights strictly reserved. Reproduction or issue to third parties in any form whatever is not permitted without written authority from the proprietor. Property of FCI. Copyright FCI.

PRODUCT NUMBER  
51740-10302403CC



mat'l code				SEE NOTE 2	tolerances unless otherwise specified		CUSTOMER		 www.fciconnect.com	
ltr	ecn no.	dr	date	linear	$.XX \pm .01 / 0.XX \pm 0.3$ $.XXX \pm .005 / 0.XX \pm 0.13$ $.XXXX \pm .0020 / 0.XXX \pm 0.051$	projection 		title		3P + 24S + 3P
				angles	$0^\circ \pm 2^\circ$			product family		PwrBlade
				dr	M. MOSTOLLER 5/1/03	scale		size		213
				enr	M. MOSTOLLER 5/1/03	1:1		dwg no		sheet
				chr	H. BREWBAKER 5/1/03			A		2 of 4
				appd	M. MOSTOLLER 5/1/03			51740-10302403CC		
sheet index	revision sheet									

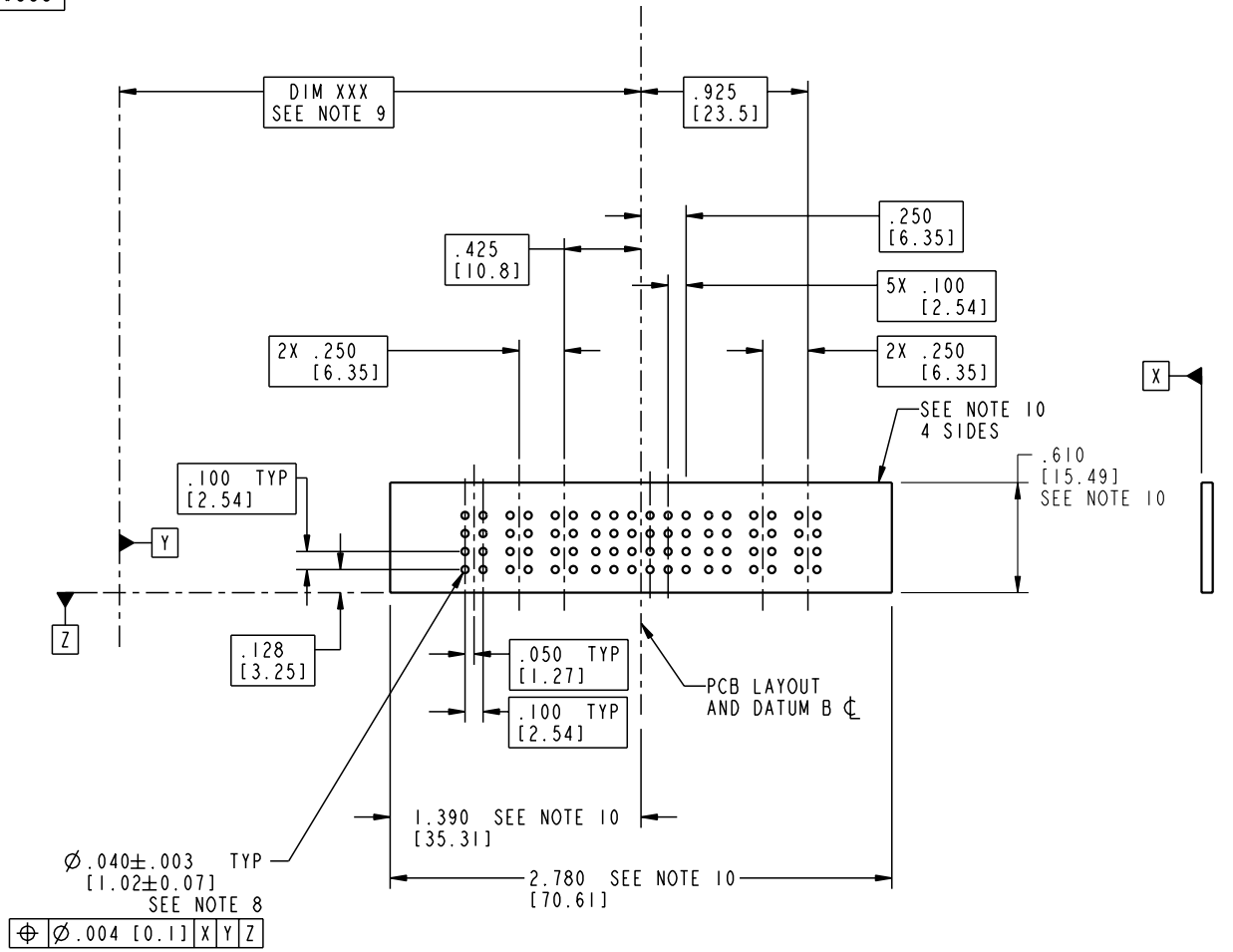
Pro/E

cage code 22526

Tous droits strictement réservés. Reproduction ou communication o des tiers interdite sous quelque forme que ce soit sans autorisation écrite du propriétaire. Propriété de c FCI. Droits de reproduction FCI.

All rights strictly reserved. Reproduction or issue to third parties in any form whatever is not permitted without written authority from the proprietor. Property of FCI. Copyright FCI.

PRODUCT NUMBER  
51740-10302403CC



mat'l code		SEE NOTE 2		tolerances unless otherwise specified		CUSTOMER		 www.fciconnect.com	
ltr	ecn no.	dr	date	linear	$XY \pm .01 / 0.XX \pm 0.3$ $.XXX \pm .005 / 0.XX \pm 0.13$ $.XXX \pm .0020 / 0.XXX \pm 0.051$	projection			title
A				angles	$0^\circ \pm 2^\circ$		INCH/MM		3P + 24S + 3P VERTICAL PRESS FIT RECEPT
				dr	M. MOSTOLLER 5/1/03	scale	1:1		product family
				enrg	M. MOSTOLLER 5/1/03				PwrBlade
				chr	H. BREWBAKER 5/1/03				code
				appd	M. MOSTOLLER 5/1/03				213
sheet index		revision sheet						size	
								dwg no	
								51740-10302403CC	
								3 of 4	

Pro/E

cage code 22526

Tous droits strictement réservés. Reproduction ou communication o des tiers interdite sous quelque forme que ce soit sans autorisation écrite du propriétaire. Propriete de c FCI. Droits de reproduction FCI.

All rights strictly reserved. Reproduction or issue to third parties in any form whatever is not permitted without written authority from the proprietor. Property of FCI. Copyright FCI.



PRODUCT NUMBER  
51740-10302403CC

NOTES:

1. DIMENSIONS AND TOLERANCES ARE IN ACCORDANCE WITH ASME Y14.5M, 1994 UNLESS OTHERWISE SPECIFIED.

CONNECTOR NOTES:

- 2 HOUSING MATERIAL: UL 94 V-0 GLASS FILLED  
HIGH-TEMP THERMOPLASTIC  
POWER CONTACT MATERIAL: COPPER ALLOY  
SIGNAL PIN MATERIAL: COPPER ALLOY
- 3. PLATING:  
SIGNAL PINS: 30u"/0.76um Au OVER 50u"/1.27um Ni  
POWER CONTACTS: 50u"/1.27um Ni UNDER ALL  
WITH 30u"/0.76um Au ON CONTACT AREA  
AND SnPb ON PCB INTERFACE

4 MANUFACTURER'S NAME, P/N, AND DATE CODE TO APPEAR ON THIS SURFACE.

5. PRODUCT SPECIFICATION GS-12-149.  
APPLICATION SPECIFICATION BUS-20-067.

PCB NOTES:

- 6. ALL HOLE DIAMETERS ARE FINISHED HOLE SIZE.
- 7. MOUNTING HOLES, WHERE APPLICABLE, ARE UNPLATED.

8  $\varnothing .0453 \pm .0010$  [1.151  $\pm$  0.025] DRILLED HOLES PLATED WITH .0003 [0.008] MIN SnPb OVER .001 [0.03] TO .003 [0.08] Cu PLATING TO ACHIEVE  $\varnothing .040 \pm .003$  [1.02  $\pm$  .07] HOLE.

9 "DIM XXX" TO BE DETERMINED BY THE CUSTOMER.

10 CONNECTOR KEEP-OUT ZONE.

mat'l code				SEE NOTE 2		tolerances unless otherwise specified		CUSTOMER		 www.fciconnect.com	
ltr	ecn no.	dr	date	linear	$.XX \pm .01 / 0.X \pm 0.3$	projection		COPY		title	
A					$.XXX \pm .005 / 0.XX \pm 0.13$					3P + 24S + 3P	
				angles	$.XXX \pm .0020 / 0.XXX \pm 0.051$					VERTICAL PRESS FIT RECEPT	
					$0^\circ \pm 2^\circ$	INCH/MM		product family		code	
				dr	M. MOSTOLLER 5/11/03	scale		PwrBlade		213	
				engr	M. MOSTOLLER 5/11/03	1:1		size dwg no		sheet	
				chr	H. BREWBAKER 5/11/03			A 51740-10302403CC		4 of 4	
				appd	M. MOSTOLLER 5/11/03						
sheet index		revision sheet									

cage code 22526

Pro/E